

ADVANTAGE-VIMAL

>>> **VIMAL** literally means **CLEAN**.



VIMAL ALLOYS



THE CLEAN STEEL-GREEN TECHNOLOGY

SOLID INFRASTRUCTURES

www.vimalalloys.com

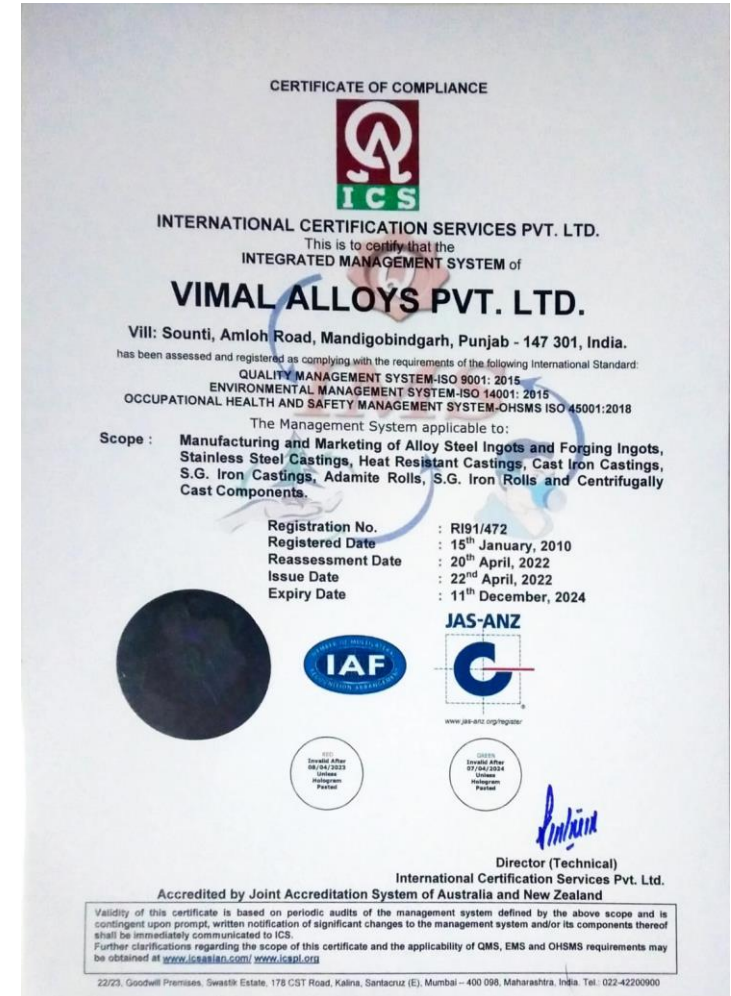


AN ISO 9001-2000 CO.

ADVANTAGE-VIMAL

>>> **VIMAL** literally means **CLEAN**.

- We aim to produce Clean Steel with minimum affect on environment.
- All our actions are directed towards this goal.
- We are ISO 9001, ISO 14001 & OHSAS 45001 certified Foundry.



VIMAL ALLOYS

>>> Your Reliable Foundry Partner

ADVANTAGE-VIMAL

▶ >>> *Your Reliable Foundry partner*



Vimal Alloys made a humble beginning in the year 1983 and is growing steadily since inception.

ADVANTAGE-VIMAL

>>> Your Reliable Foundry Partner

An unbeatable team consisting of highly experienced foundry experts, young engineers and technocrats apt in software skills for planning & execution supported by a forward looking management.

ADVANTAGE-VIMAL



▶ >>> *Your Reliable Foundry partner*

- ▶ Largest operating non-captive Ferrous Foundry manufacturing Castings and Components.
- ▶ Foundry & Machining facilities under one roof.
- ▶ Casting weight range from 500 Kg to 70000 Kg single piece, sizes varying from 500mm to 8000mm, and Metallurgically 'anything ferrous' under one roof.
- ▶ Only foundry in Asia capable of pouring vertical castings upto 7.5 meter height.

>>> Geography providing a helping hand

Advantage Geographical location :

- Extremely dry climate for almost 10 months in a year similar to deserts such as Gobi, Thar & Sahara.
- Most of the other coastal (or near coastal) foundries have to deal with moisture in the air which is the greatest enemy of any foundry professional.
- Geographical advantage for the production of quality casting.
- Located at the junction of major national highways and railways trunk routes leading to eastern, southern and western sea coasts.
- Close to Chandigarh International Airport 60 Kms, Ludhiana Domestic Airport 35 Kms and New Delhi 250 kms.

>>> **Geography providing a helping hand**

Advantage Manpower Availability :

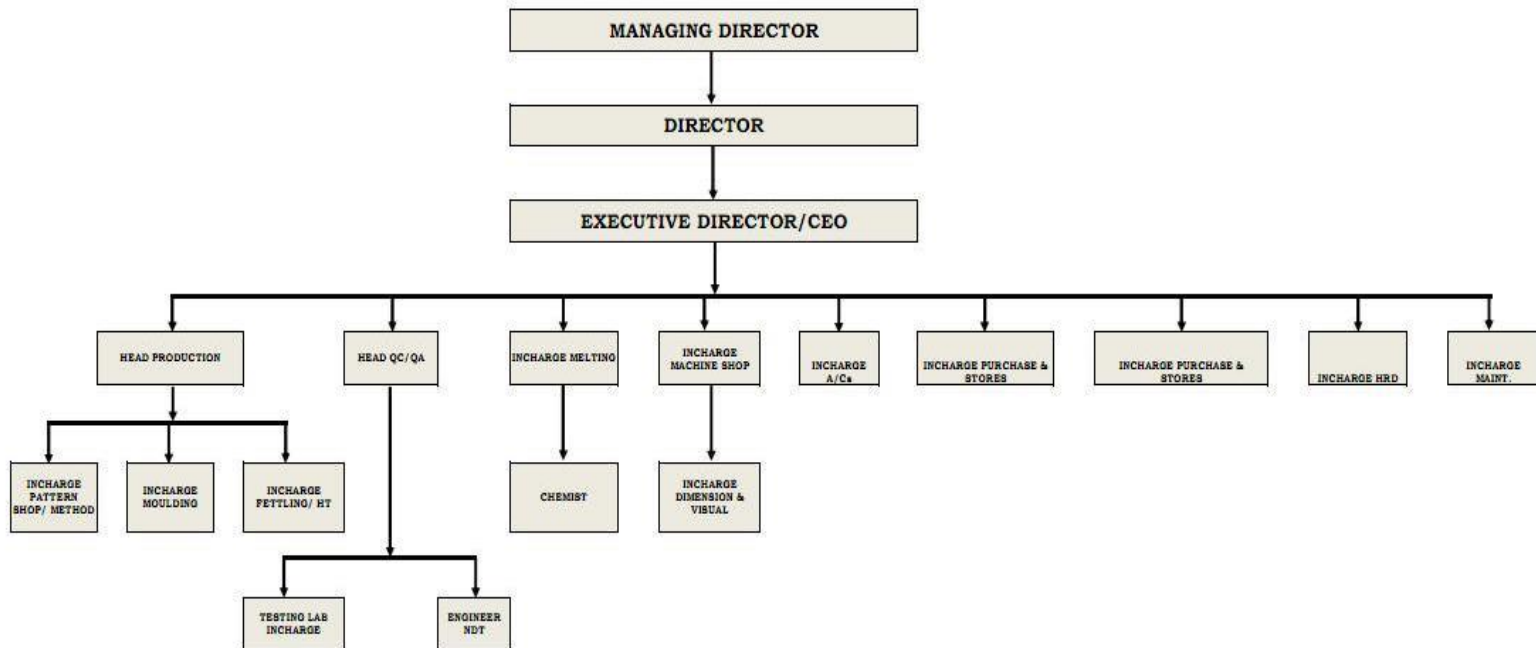
- North India is inhabited by extremely skilled artisans migrated throughout the ages for the manufacture and upkeep of the royal armory.
- Highly Experienced Team meets the customers Requirements in minimum delivery time with highest of the Quality Level.

ADVANTAGE-VIMAL

▶ >>> *Your Reliable Foundry partner*

VIMAL ALLOYS PRIVATE LIMITED

ORGANIZATION STRUCTURE



ADVANTAGE-VIMAL



>>> **VIMAL** literally means **CLEAN**.

MODERN
INFRASTRUCTURE
WITH
TRAINED MANPOWER

>>> **VIMAL literally means CLEAN.**

MELTING & REFINING FACILITIES

- 6 Nos Induction Furnaces with metal holding facility with total capacity of 95 MT .
- Metal Refining Facility -LRF, AOD& VD.
- 18 Nos pouring Ladles.
- Scrap Processing Machines.

ADVANTAGE-VIMAL



>>> **VIMAL** literally means **CLEAN**.

REFINING FACILITIES

ADVANTAGE-VIMAL



>>> **VIMAL** literally means **CLEAN**.

VD CHAMBER



ADVANTAGE-VIMAL

>>> **VIMAL** literally means **CLEAN**.

Ladle
Refining
Furnace



ADVANTAGE-VIMAL

>>> **Your Reliable Foundry Partner**

HEAT TREATMENT FACILITIES

2 NOS Bogie Type Furnaces

- SIZE 8.0M X 8.0M X 3.5M
- SIZE 4.5M X 4.5M X 1.3M

MATERIAL HANDLING FACILITIES

- 21 Nos Over Head Cranes.
- Mobile Crane.
- 3 Nos Material Transfer Vehicles.

ADVANTAGE-VIMAL

>>> **Your Reliable Foundry Partner**

INSPECTION & TESTING FACILITIES

- 21 Channel ARL make Spectrometer.
- 5 kg Induction Furnace for developing New Alloys.
- 40 MT capacity UTM Machine.
- Hardness Testing (portable & fixed bench type)
- Charpy Impact Testing Machine (Including Testing at Sub-Zero Temperature)
- Sand Testing Equipment
- Immersion Type Digital Pyrometer
- Optical Pyrometer
- Microscopic Examination
- Dimension Measuring Instruments
- NDT Facilities (UT, MT, LPT)

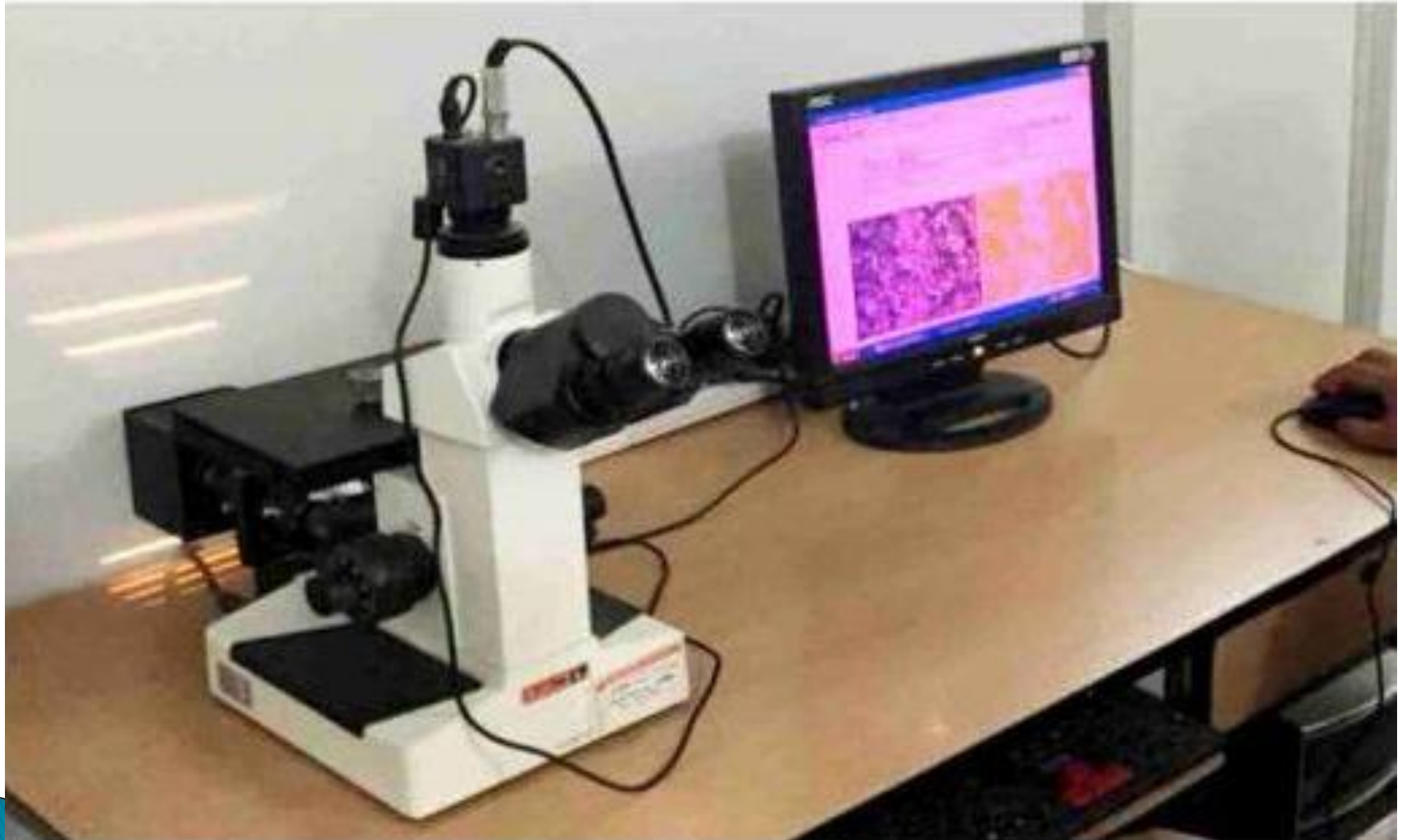
>>> **Your Reliable Foundry Partner**

MODERNIZATION

- 20 MT per Hour Continuous Mixture With Shakeout, Sand Reclamation, Pneumatic Sand Transfer System For Furan Resign Mould And Cores.
- Casting Solidification And Flow Simulation Software.
- 3D CNC Pattern Router
- Spectro, Germany Make 25 Channel Spectrometer.
- Extension And Upgradation Of Existing 20m X 100m (70 MT Capacity) To 20m x 225m (125 Mt Capacity) Shed/Moulding Working Area.
- Conversion of Heat Treatment Furnaces to PNG Fired Automatically Temp. Controlled Heat Treatment Furnaces.

>>> **Your Reliable Foundry Partner**

MICROSCOPIC EXAMINATION



>>> **Your Reliable Foundry Partner**

MACHINING FACILITY

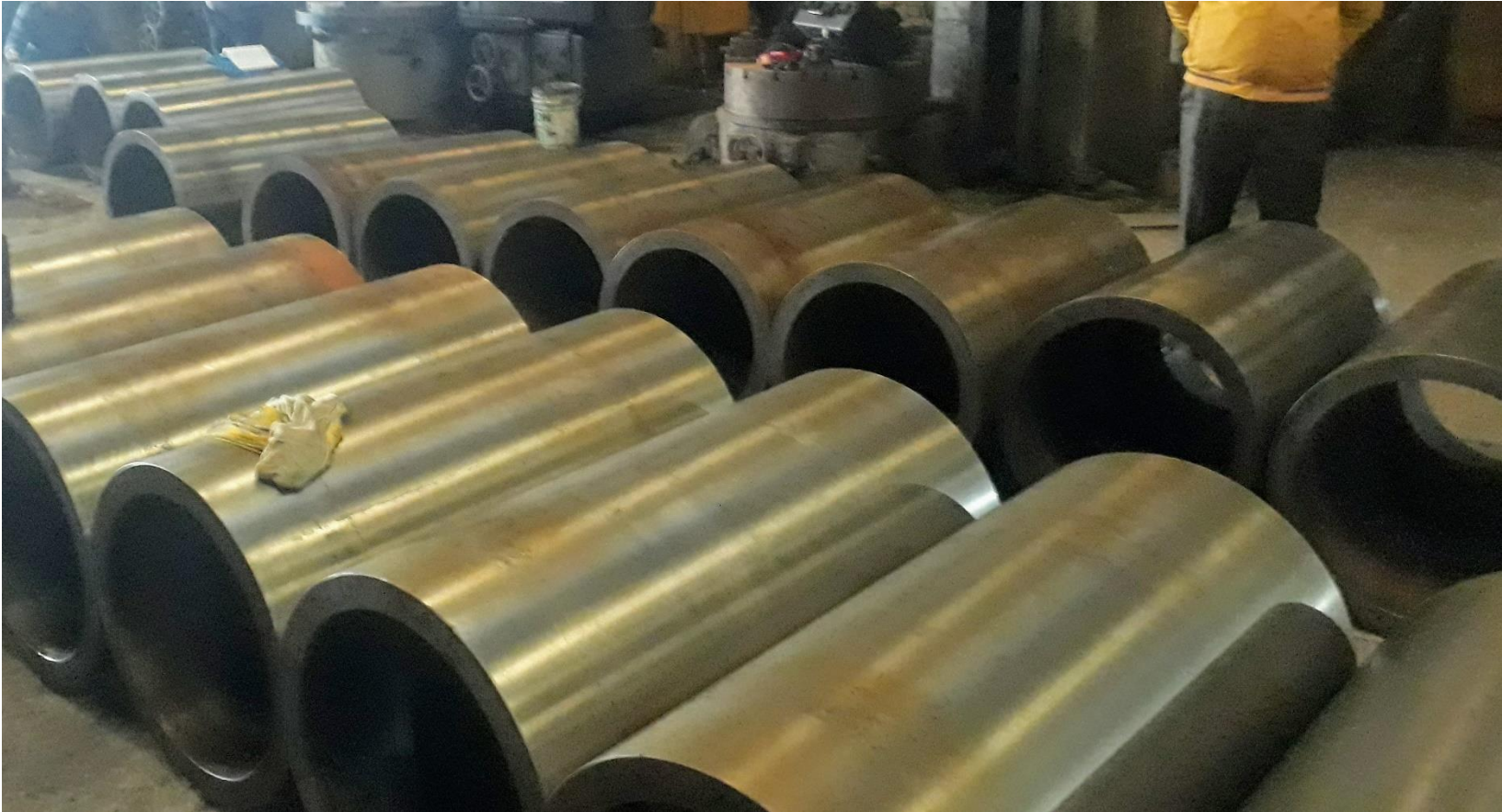
- 12 Nos Vertical Boring Machines
Table Dia. ranging from 700MM to 6800MM .
- 5 nos Horizontal Boring Machines
Spindle Dia. 160MM with Rotary Tables up to 40 MT
- 27 Nos Lathe Machines
Swing Dia up to 1500MM , Bed Length up to 5000MM
- Shapers, Drills & Plano Miller
Table size 1500MM x 4000MM x 1000MM.

STATIC & CENTRIFUGAL MANUFACTURING FACILITIES

- Centrifugal Casting Machine.
- Permanent Die Manufacturing Shop.
- Machining Facilities.

ADVANTAGE-VIMAL

>>> **Your Reliable Foundry Partner**

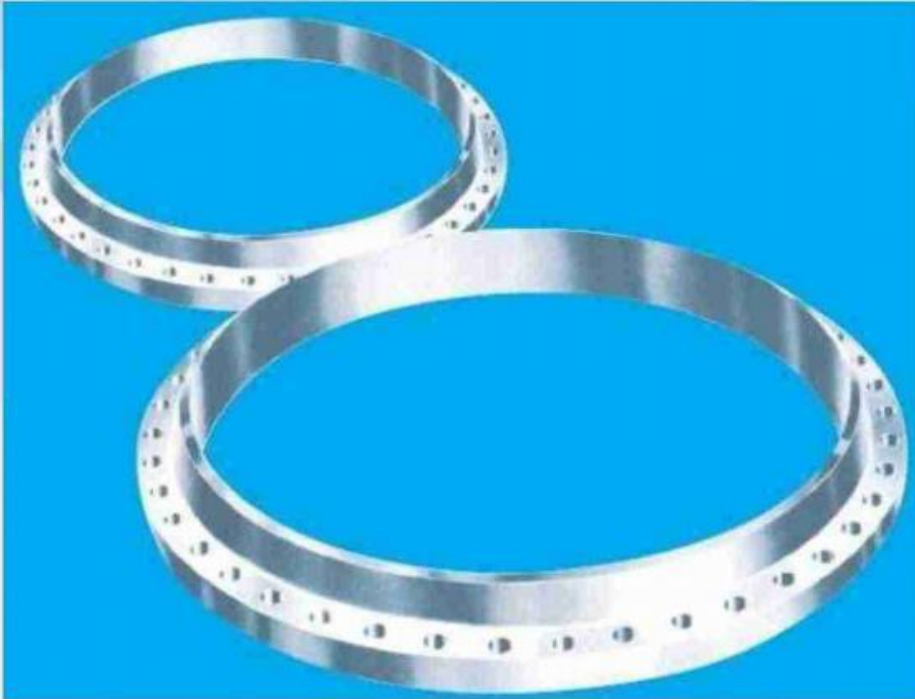


ADVANTAGE-VIMAL

>>> **Your Reliable Foundry Partner**



CENTRIFUGALLY CAST STAINLESS STEEL CAST/WROUGHT LABYRINTH & SEALING RINGS



OTHER CENTRIFUGALLY CAST COMPONENTS

1. Air Injection Tubes for Kiln
2. Paper Mill Rolls (Calendar Rolls)
3. Roll Sleeves
4. Roller Table Rolls (Hollow)
5. Stainless Steel Shaft Sealing Rings
6. Large Pipeline Flanges - API, IBR & IS 13655

ADVANTAGE-VIMAL

>>> **Your Reliable Foundry Partner**

SUPPORTING FACILITIES

- PATTERN SHOP
- FETTLING, CLEANING, SHOT BLASTING & UPGRADATION.
- COMPRESSORS
- GAS STORAGE TANKS

IN-HOUSE PATTERN MAKING & REPAIR FACILITY



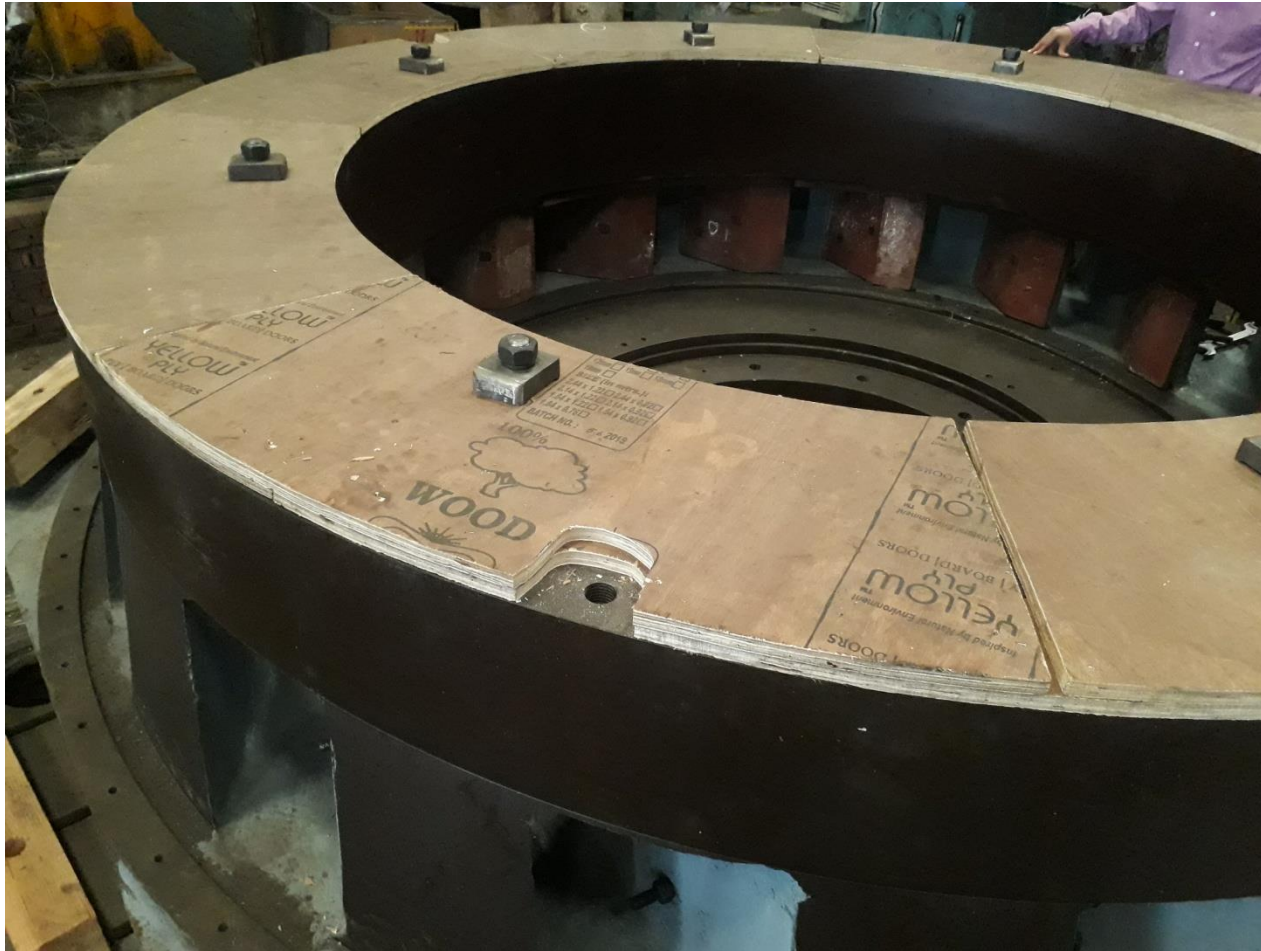
CORE SEGMENTS READY FOR ASSEMBLY



MOULD WITH ASSEMBLED CORE



RAYMOND MILL BASE ASSMBLY



>>> Your Reliable Foundry Partner

Sectors We Serve

- Steam, Gas & Hydro Turbine Components.
- Cement Plant Components.
- General Engineering Components.
- Flue Gas De-Sulphurizer Mill Components.
- Vertical Rollers Mill & Pulverizing Mill Components.
 - ✓ BHEL, Hyderabad-International Combustion Design
 - ✓ Thermax Babcock and Wilcox
 - ✓ Schenck Process (Formerly Alstom)
 - ✓ Mitsubishi

>>> **Your Reliable Foundry Partner**

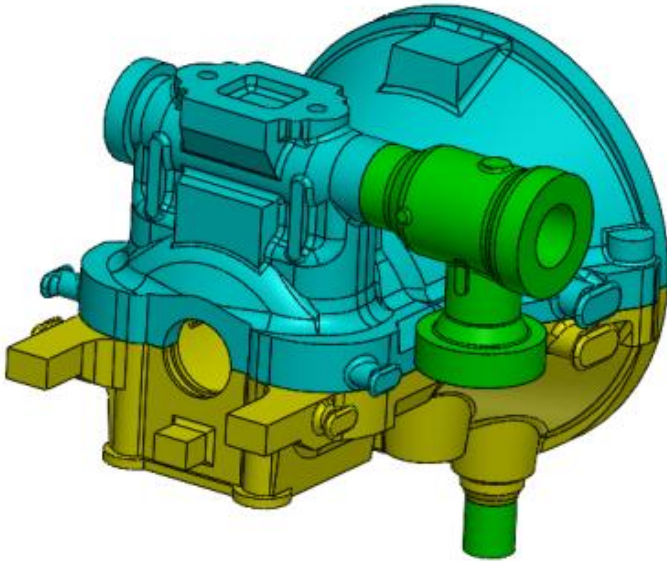
PRODUCTS

(Tailor made SOLUTIONS)

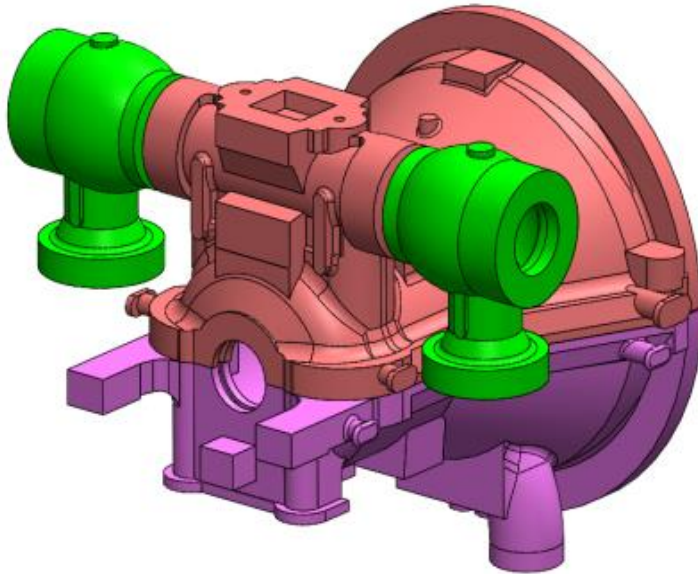
CASTING :- Outer Casing (UH & LH)

CUSTOMER :- BHEL Hyderabad

- **PROJECT :- OMPL**
- **MATERIAL GRADE :- G17CrMoV5-10**
- **WEIGHT OF CASTING :- 27600 Kg**
- **OVERALL DIMENSION :- 3.64m x 3.12m x 1.37m**
- **NOTES :- Top, bottom halves and weld joined body are shown**
- **in different colors.**







CASTING :- Outer Casing (UH & LH)

CUSTOMER :- BHEL Hyderabad

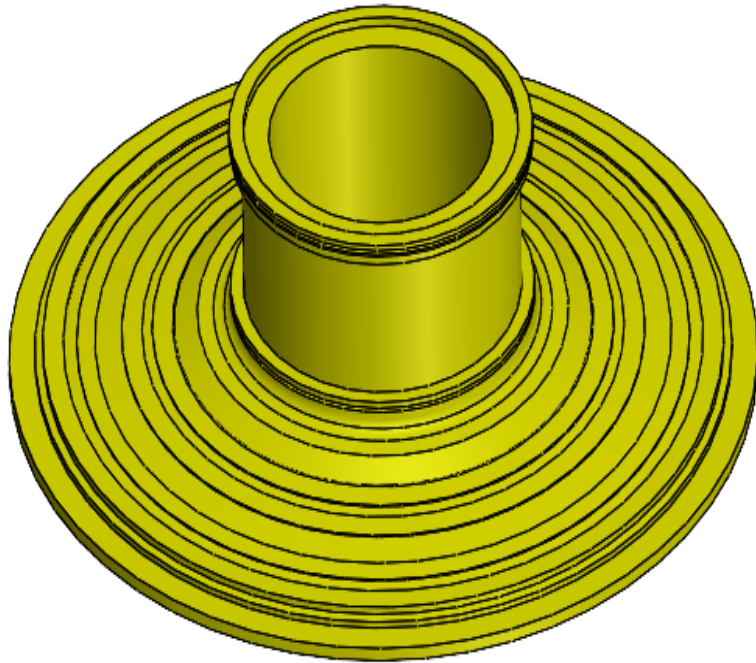
PROJECT :- Shree Cement

MATERIAL GRADE :- G17CrMoV5-10

WEIGHT OF CASTING :- 25529 Kg

OVERALL DIMENSION :- 3.1m x 3.68m x 2.91m

**NOTES :- Top and bottom halves are shown in
different color.**



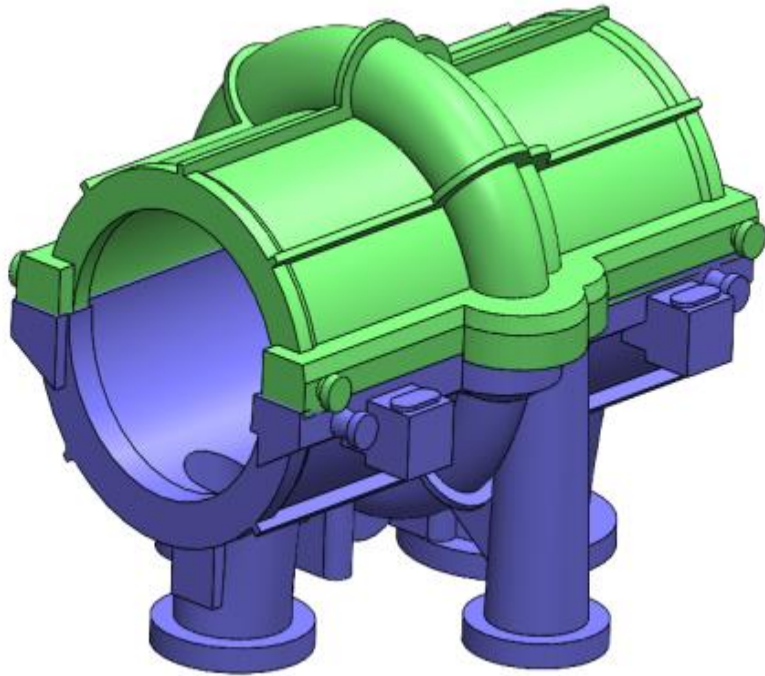
CASTING :- Finish Machined Mill Head

CUSTOMER :- Metso Outotec Pty Ltd, USA

MATERIAL GRADE :- SGI 500/7

WEIGHT OF CASTING :- 15000 Kg

OVERALL DIMENSION :-Ø 3.69m x 1.23m



CASTING :- Casing (UH & LH)

CUSTOMER :- BHEL Hyderabad

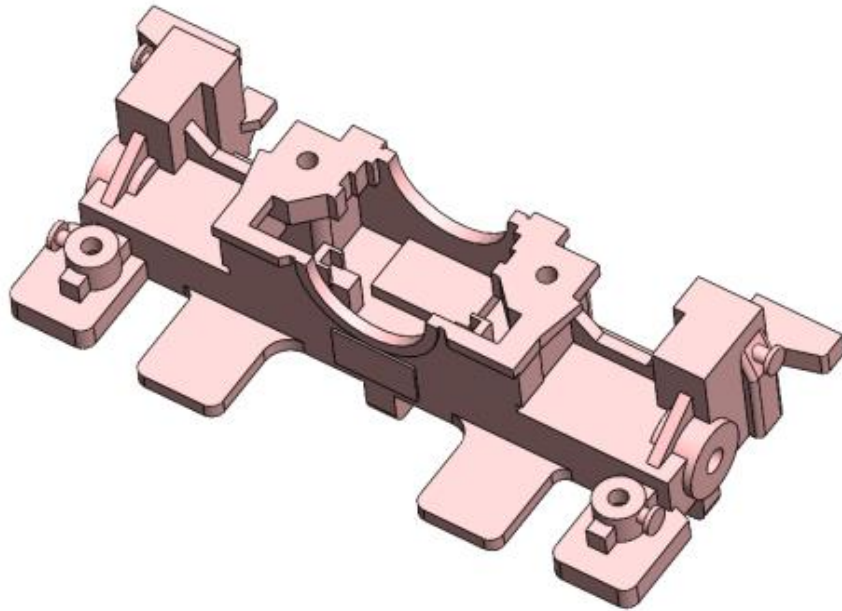
PROJECT :- NRL Compressor

MATERIAL GRADE :- ASTM A216 Grade WCA

WEIGHT OF CASTING :- 8900 Kg

OVERALL DIMENSION :-2.38m x 2.12m x 1.63m

NOTES :- Top and bottom halves are shown in different color.



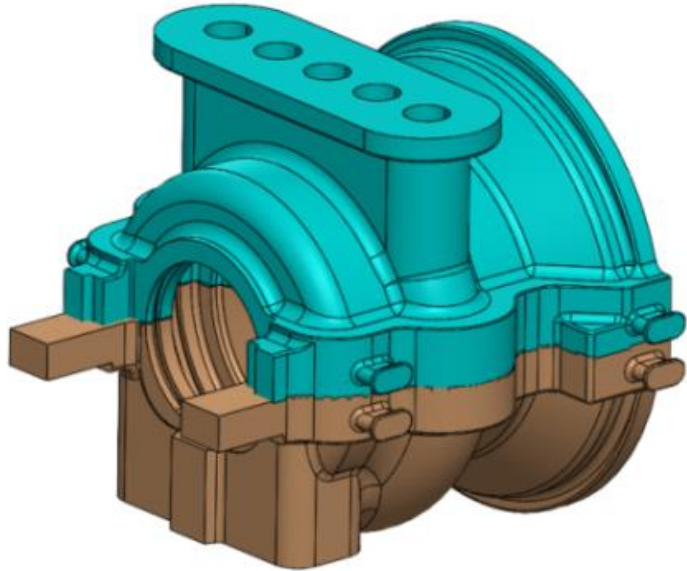
CASTING :- Front BRG Pedestal

CUSTOMER :- BHEL Haridwar

MATERIAL GRADE :- EN-GJS-400-18U

WEIGHT OF CASTING :- 3555 Kg

OVERALL DIMENSION :- 2.90m x 1.23m x 7.55m



CASTING :- Outer Casing (UP & LP)

CUSTOMER :- Doosan Skoda, Czech Republic

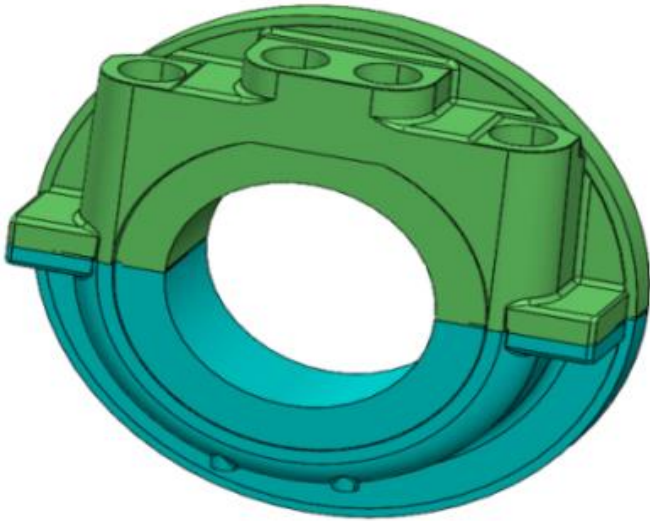
PROJECT :- Quang Trach

MATERIAL GRADE :- G17CrMo5-5

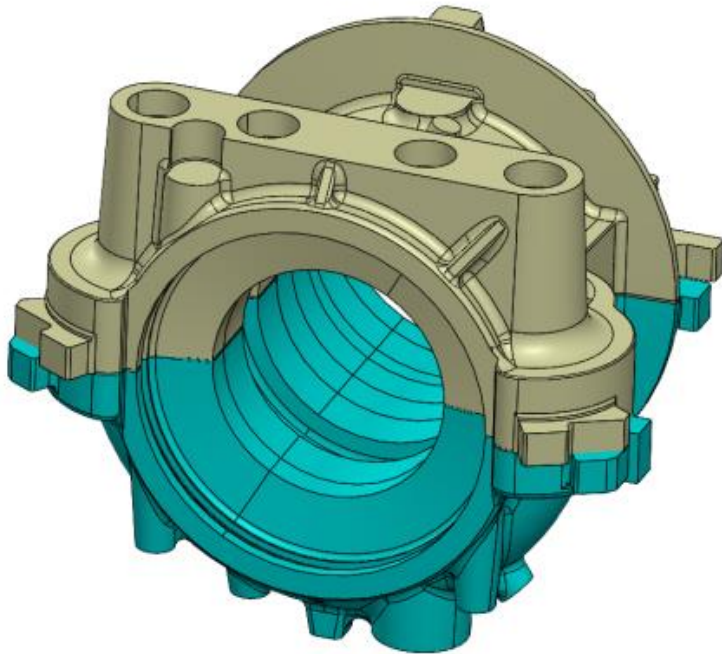
WEIGHT OF CASTING :- 8496 Kg

OVERALL DIMENSION :-2.5m x 2.2m x 2.1m

NOTES :- Top and bottom halves are shown in different color.



- **CASTING :- Bypass Chamber (UH & LH)**
- **CUSTOMER :- Doosan Skoda, Czech Republic**
- **PROJECT :- Olefins**
- **MATERIAL GRADE :- G20Mo5**
- **WEIGHT OF CASTING :- 1595 Kg**
- **OVERALL DIMENSION :-1.5m x 0.77m x 0.41m**
- **NOTES :- Top and bottom halves are shown in different color.**



CASTING :- Inner Casing (UP & LP)

CUSTOMER :- Doosan Skoda, Czech Republic

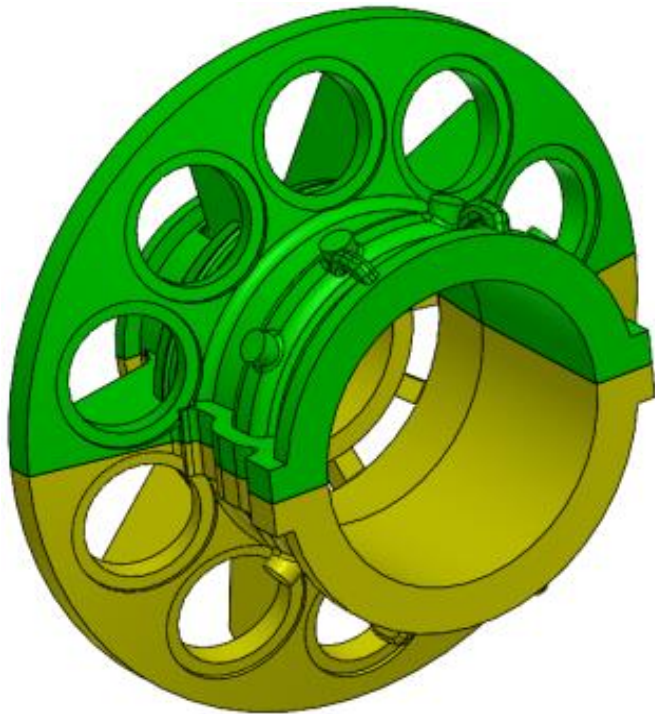
PROJECT :- Optovice

MATERIAL GRADE :- G17CrMoV5-10

WEIGHT OF CASTING :- 7500 Kg

OVERALL DIMENSION :-1.9m x 1.6m x 1.5m

NOTES :- Top and bottom halves are shown in different color.



CASTING :-GAS TURBINE COMPRESSOR CASING

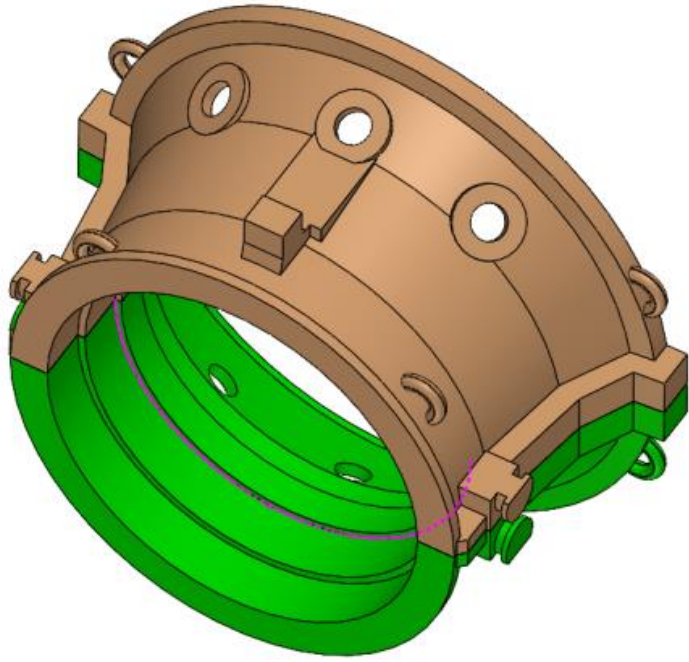
CUSTOMER :- Gas Turbine Division-BHEL, Hyderabad

MATERIAL GRADE :- NODULAR IRON TO EN-GJS-400-18U

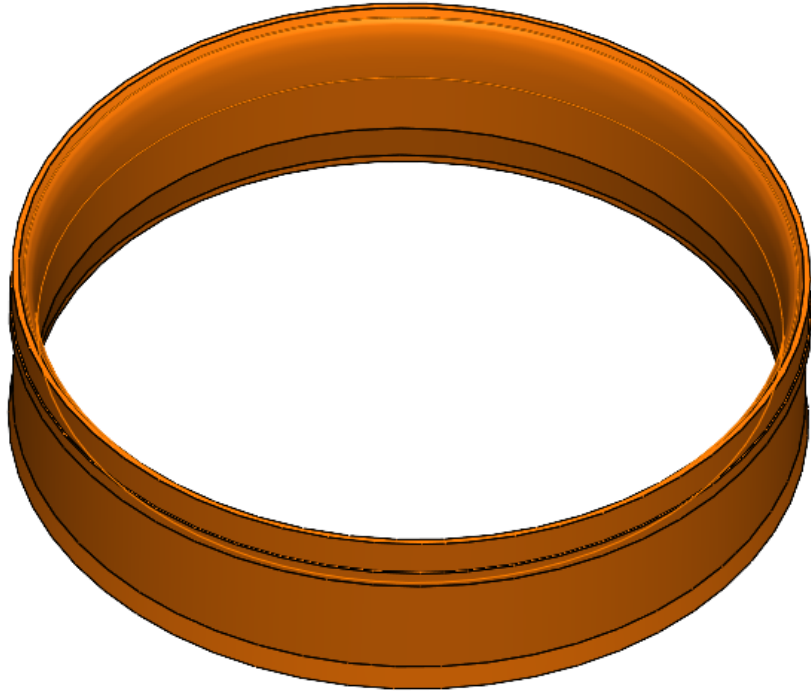
WEIGHT OF COMPONENT :- 5800 KG

OVERALL DIMENSION :-Ø2.51m x 1.42m

NOTES :- Top and bottom halves are shown in different color.



- **CASTING :- GAS TURBINE CASING**
- **CUSTOMER :- Gas Turbine Division-BHEL, Hyderabad**
- **MATERIAL GRADE :- NODULAR IRON TO EN-GJS-400-18U**
- **WEIGHT OF CASTING :- 5900 Kg**
- **OVERALL DIMENSION :-2.7m x 2.5m x 1.3m**
- **NOTES :- Top and bottom halves are shown in different color.**



CASTING- Runner Band Casting

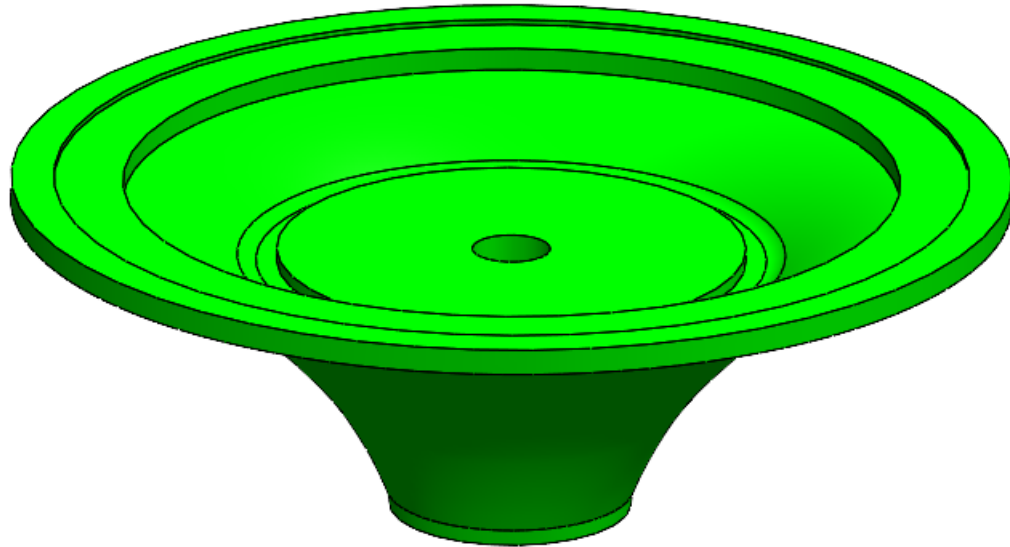
CUSTOMER- GE/ Star Wire

PROJECT- Jorethang

DIMENSION-Ø3.2m x Height 0.80.

WEIGHT-4195Kg





CASTING- Runner Crown Casting

CUSTOMER- GE/Star Wire

PROJECT-Tashiding

DIMENSION-Ø2.8m x Height 1.0m.

WEIGHT-6250Kg

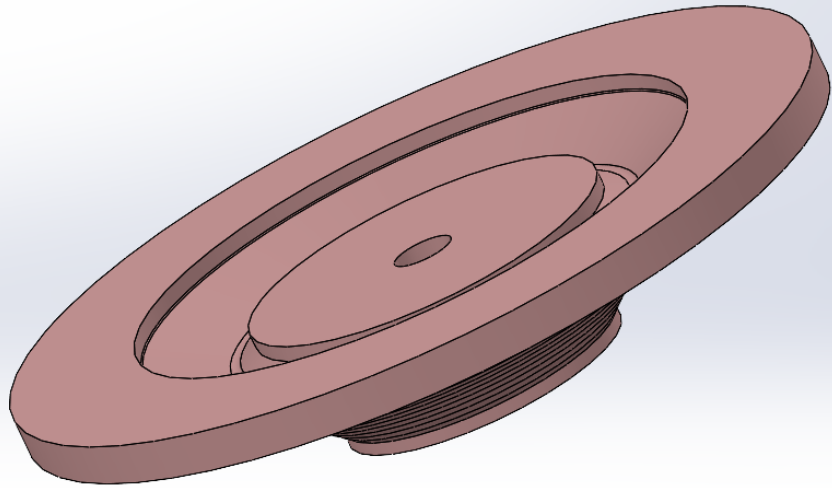
CASTING- Crown

CUSTOMER- GE/Star Wire

PROJECT-Tashiding

DIMENSION-Ø2.2m x Height 0.50m.

WEIGHT-3400Kg



PROOF MACHINING OF MILL BASE



IRON/SG IRON CAST COMPONENTS



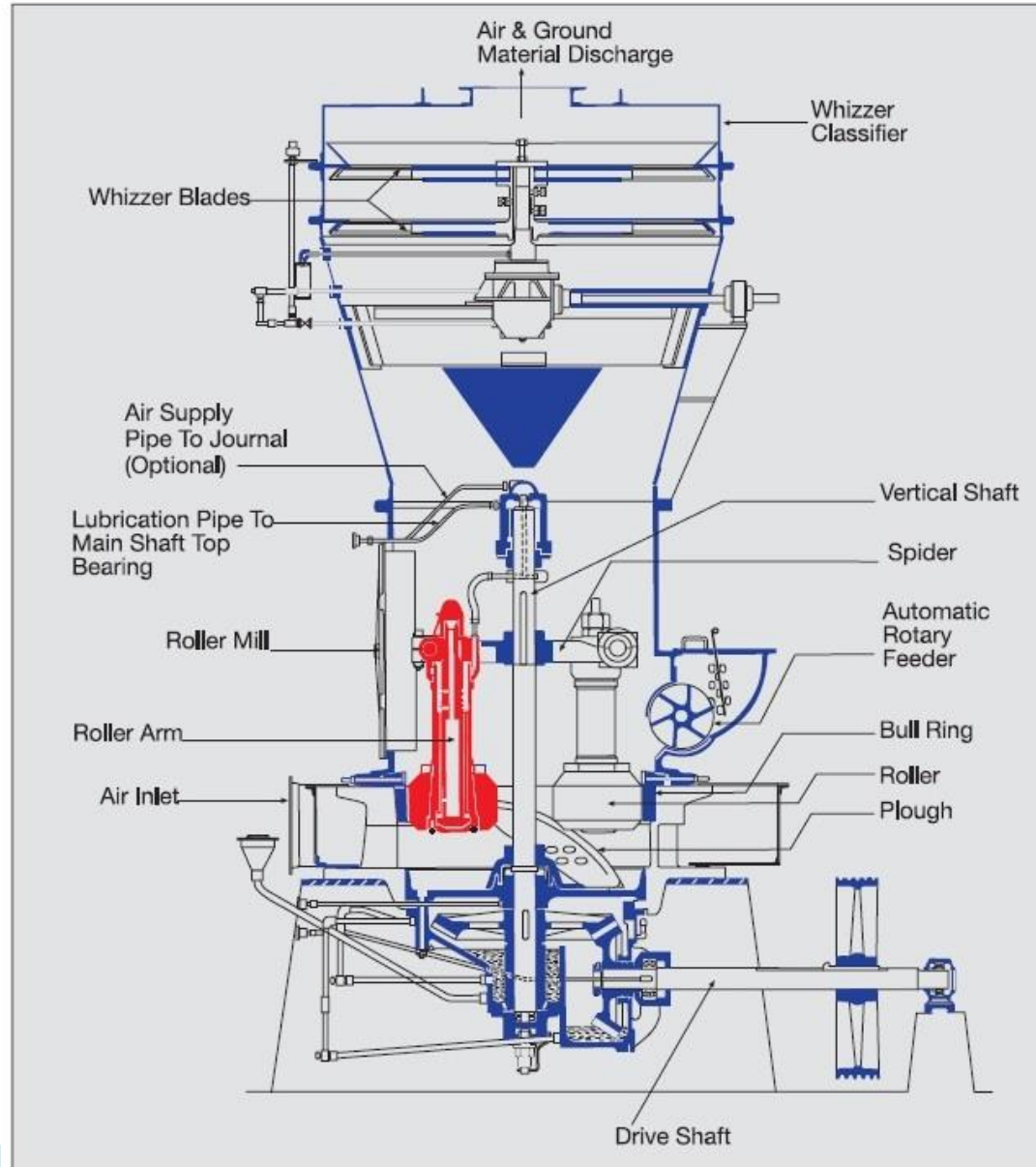
CRITICAL COMPONENT RE-BUILDING



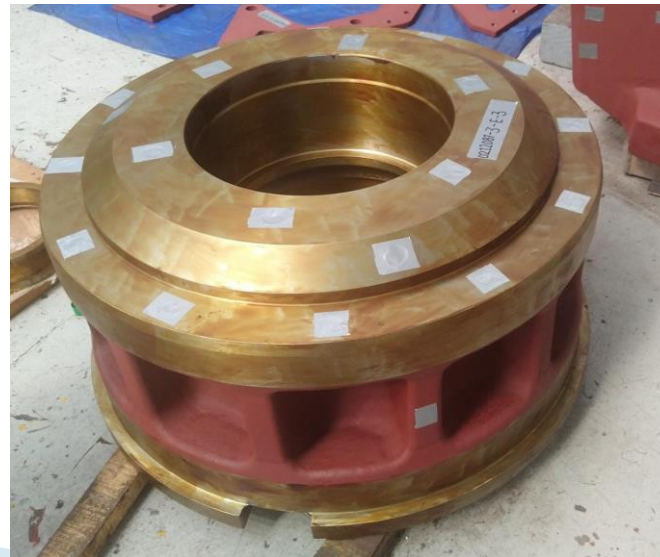
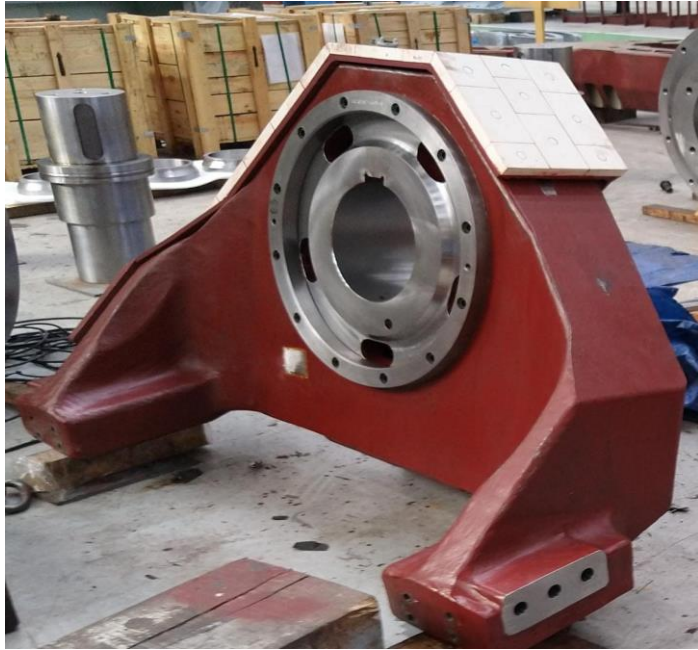
INAUGURAL DISPATCH CEREMONY FOR EXPORT OF SAG MILL COMPONENTS FOR 9.5 METER DIA SAG MILL CROWN & PETAL WEIGHT 145 MT.



VERTICAL ROLLER MILL COMPONENTS



PULVERIZER COMPONENTS



QUARTER SEGMENT OF 12M DIA GIRTH GEAR FOR 9.5M DIA SAG MILL. GIRTH GEAR WEIGHT 100MT.



SLAG POT





>>> **Your Reliable Foundry Partner**

**A LARGE HOUSING FOR 4500 MM
WIDE PLATE MILL-CROP SHEAR**




>>> Your Reliable Foundry Partner



**ROLL CHOCK FOR
STEEL PLANT ROLLING MILL**

>>> Your Reliable Foundry Partner



**A LARGE SG IRON CASTING
IN BLASTING CHAMBER**

>>> **Your Reliable Foundry Partner**



BED PLATE

>>> **Your Reliable Foundry Partner**



Bottom Table for Mechanical Press

>>> **Your Reliable Foundry Partner**



**BOTTOM TABLE & RAM FOR
A LARGE MECHANICAL PRESS**

>>> **Your Reliable Foundry Partner**



**ROLLS FOR HOT & COLD
ROLLING MILLS**

>>> **Your Reliable Foundry Partner**



40 MT Grinding Table

For Cement Equipment Manufacturing Co. with Japanese Collaboration

>>> **Your Reliable Foundry Partner**

Hydraulic Cylinder 700 Bar Pressure Hydraulic Press for HAL



>>> **Your Reliable Foundry Partner**

70 MT Tup for Counter Blow Hammer



>>> Your Reliable Foundry Partner



SUPPORT ROLLER

>>> **Your Reliable Foundry Partner**



A HIGH HARDNESS 310-360 BHN GEAR BLANK

>>> **Your Reliable Foundry Partner**



DIA 2500-ROLLER TIER

>>> **Your Reliable Foundry Partner**

Mill Heads for Mineral Processing Equipment



>>> **Your Reliable Foundry Partner**

SAG Mill Head 7.8 M Dia. X 65 MT
For export.



>>> Your Reliable Foundry Partner

**KILN TYRE 6.2 M DIA X 60 MT
For Export.**



>>> Your Reliable Foundry Partner

**This is not the end of the journey.
We are always committed to a
continuous improvement &
development.**

Thank You

www.vimalalloys.com